  
**TOWER**





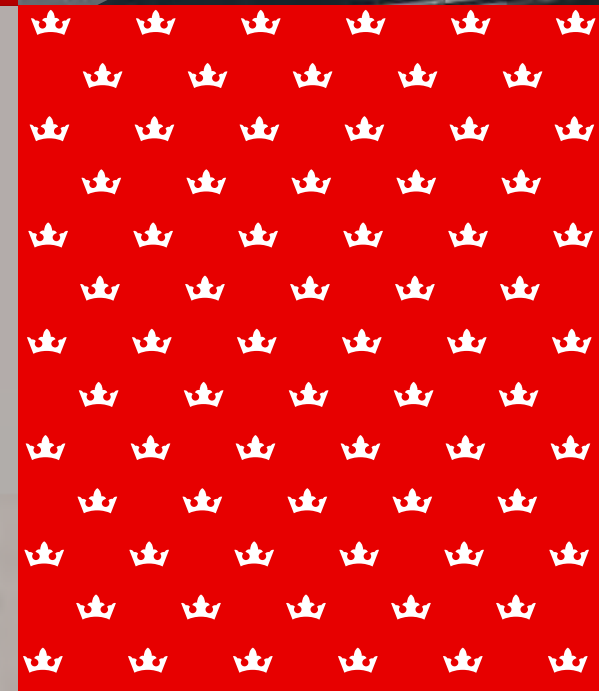
HELLO  
GOOD  
TIMES!



Q  
O  
N



QUEENS  
QUAY





# THE BUILDING

BEHOLD THE RISING OF A NEW ICONIC PRESENCE IN  
THE HEART OF DOWNTOWN TORONTO, WHERE VIVID CITY SKYLINES  
AND WATERFRONT HORIZONS RULE.



Announcing the epitome of modern elegance at Q Tower, a 60-storey skyscraper that combines rebellious flair and classic sophistication. A majestic expression in contemporary architecture, the refined tower rises catching sunlight from the south and reflecting a prism of city lights from the north. With a dark-coloured exterior palette and zigzag balconies, the design exudes drama and dynamic movement.

In sync with the uniquely urban and natural surroundings, Q Tower will feature an onsite public park connecting residents via pedestrian routes and bicycle paths linking Toronto's waterfront.





# THE VIEWS

TIMELESS VIEWS ALL AROUND Q TOWER  
WILL FOREVER BE UNMATCHED.



## WATER VIEW

Look south over the calming expanse of Lake Ontario. Panoramic sunset views become a restorative ritual to end your busy days. The water views at Q Tower are a serene escape from the hustle and bustle of city life.

## CITY VIEW

Absorb the energetic pulse of city living. The view to the north perfectly captures the vibrance that comes with a downtown lifestyle. See the city sparkle endlessly into the horizon.





# PORTE COCHÈRE

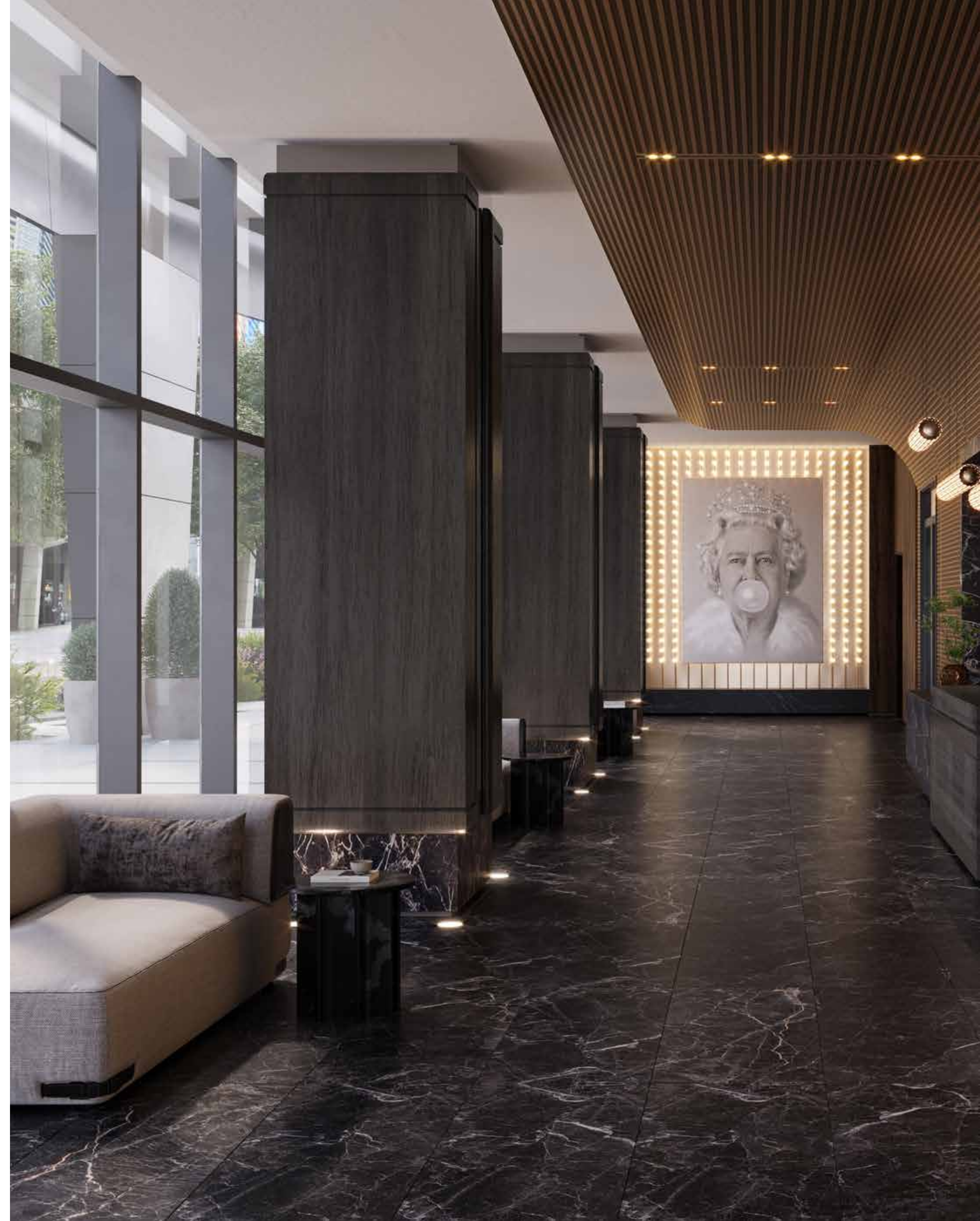
AN ARRIVAL YOU WON'T SOON FORGET IN A STUNNING PORTE COCHÈRE  
THAT ENVELOPS YOU IN A SENSE OF EXCLUSIVITY.

  
**THE LOBBY**



Experience the royal touch in a luxurious lobby swathed in decadent dark hues of marble and metal, setting the scene for a dramatic entrance every time.

**MAKE AN UNFORGETTABLE ENTRANCE**







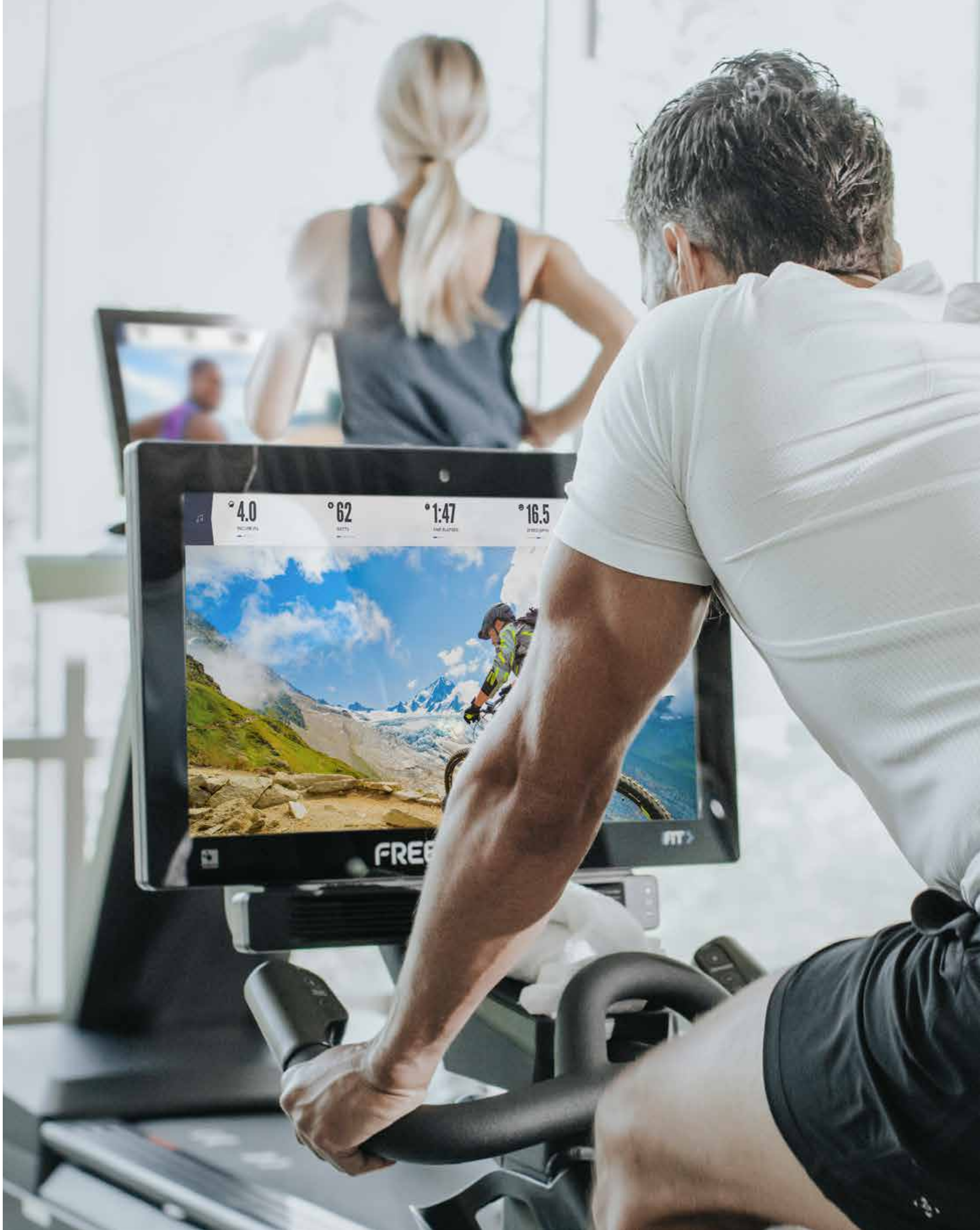
# 2<sup>ND</sup> FLOOR AMENITIES



- 1  
CARDIO AND WEIGHTS
- 2  
OUTDOOR FIT ZONE
- 3  
YOGA AND STRETCH STUDIO
- 4  
MASSAGE ROOM
- 5  
OUTDOOR SOCIAL LOUNGE
- 6  
CO-WORKING SPACE
- 7  
GAMES ROOM



# FREEMOTION FITNESS



FREEMOTION.



Freemotions's exclusive partnership with Lifetime Developments and DiamondCorp, provides Q Tower residents with one of the city's most advanced and exclusive training spaces with access to state-of-the-art cardio equipment and iFIT, a leading interactive fitness program.

iFIT connects users to thousands of coach-led workouts with Olympic champions, celebrity trainers, physical therapists, and professional cyclists, high-intensity studio classes from the comfort of home, global workouts filmed in over 40 countries across all seven continents, and Google Maps-driven terrain simulations that can take your workout anywhere in the world.



**JAMES BOND  
INSPIRED GAMES ROOM**

Dark, plush décor, seductive lighting, and an air of excitement create the ultimate ambiance for stylish high-stake gaming.

**LAY ALL YOUR CARDS ON THE TABLE**



# OUTDOOR SOCIAL LOUNGE



Enjoy fun and games in the covered Outdoor Social Lounge. Challenge your friends to a lively game of ping pong, foosball, or enjoy a drink with friends with the marvellous views surrounding you.

**STEP OUTSIDE AND LET IT ALL IN**



# 3<sup>RD</sup> FLOOR AMENITIES

1  
OUTDOOR DINING TERRACE

2  
OUTDOOR LOUNGE

3  
PRIVATE DINING

4  
Q LOUNGE

5  
THEATRE ROOM



# Q LOUNGE



Destination...stylish, social and chic.  
Indulge in cocktails and conversations by the bar or at the fireside.

**SET THE SCENE, UNLEASH THE VIBE**

# OUTDOOR DINING TERRACE



Surround yourself with stunning city views atop the Outdoor Dining Terrace. Wine and al fresco dining with friends in a gorgeous outdoor setting complete with a pizza oven, inviting dining spaces, bar and laid-back lounges.

**ESCAPE THE EVERYDAY ORDINARY**





# 6<sup>TH</sup> FLOOR AMENITIES



1  
VIEW LOUNGE

2  
OUTDOOR DINING TERRACE

3  
OUTDOOR LOUNGE

4  
PICKLEBALL COURT

5  
KID'S ZONE

6  
KID'S OUTDOOR PLAYGROUND





## PICKLEBALL COURT



Pickleball has become the trendiest pastime around, and it's only natural that the most in-demand condominium in the city offers a space to enjoy this popular game.

**TAKE LIFE UP A LEVEL**

# KID'S ZONE



Games, toys, and books galore! The Kid's Zone is an exclusive area designed for young minds to explore, play, unleash their creativity, and forge new friendships.

**MAKE ROOM FOR PLAY**



ARTIST FEATURE

## SEEK INSPIRATION IN THE FORBIDDEN

From a childhood in communist East Germany, to an initial career as a construction engineer, no one could have predicted the unexpected path that Michael Moebius' life would take when, by chance, he opened a book of alluring pin-ups by Alberto Vargas. One look and his passion for creative expression took hold, fueling his rise as one of the most sought-after contemporary artists of today.

A true multi-faceted artist, skilled at both photography and painting, Moebius has graced the pages of international publications like Vogue, Vanity Fair and Playboy and exhibited in major galleries across the globe. His hyper-realistic illustrative portraits of pop culture icons blowing enormous Bubblicious-worthy bubbles with a playful smirk have garnered the attention of some of the world's most discerning collectors and celebrity clientele, including Paris Hilton, Hugh Hefner, Rihanna, and David Guetta.

Now, these pieces of striking symbolism, from one of the most recognized and in-demand contemporary artists in the world, will grace the spaces at Q Tower. Colourful. Thought-provoking. Tongue-in-cheek. A reflection of life in this exclusive community.

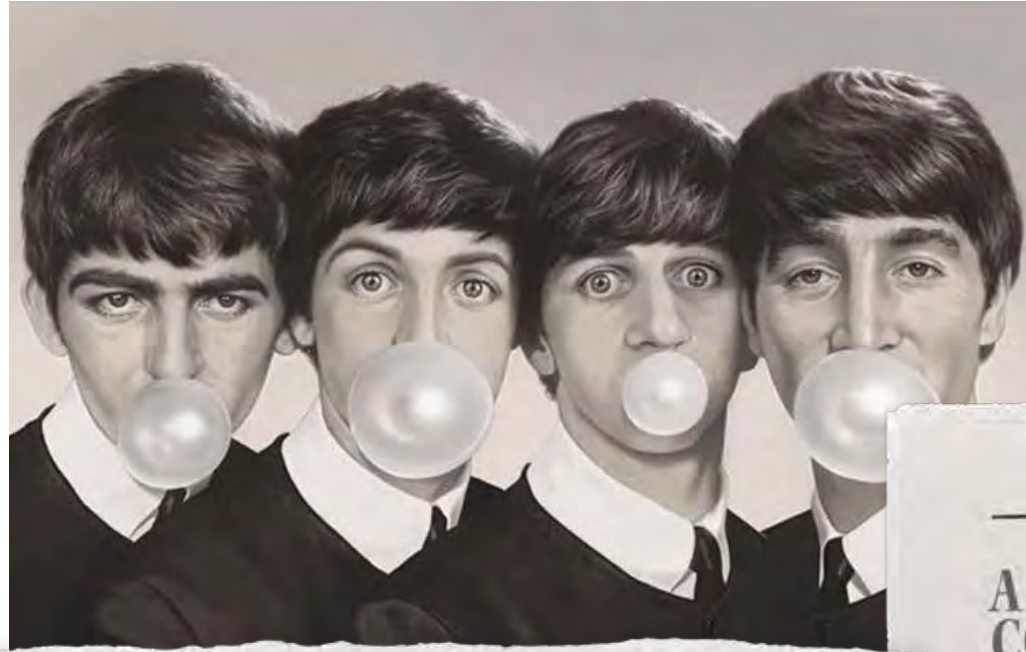


MICHAEL MOEBIUS

ARTIST  
**MICHAEL  
MOEBIUS**

NEXT PAGE:  
JAMES BOND (DANIEL CRAIG) / 2023





### A ROYAL COLLABORATION

LIFETIME DEVELOPMENTS X DIAMONDCORP X MICHAEL MOEBIUS

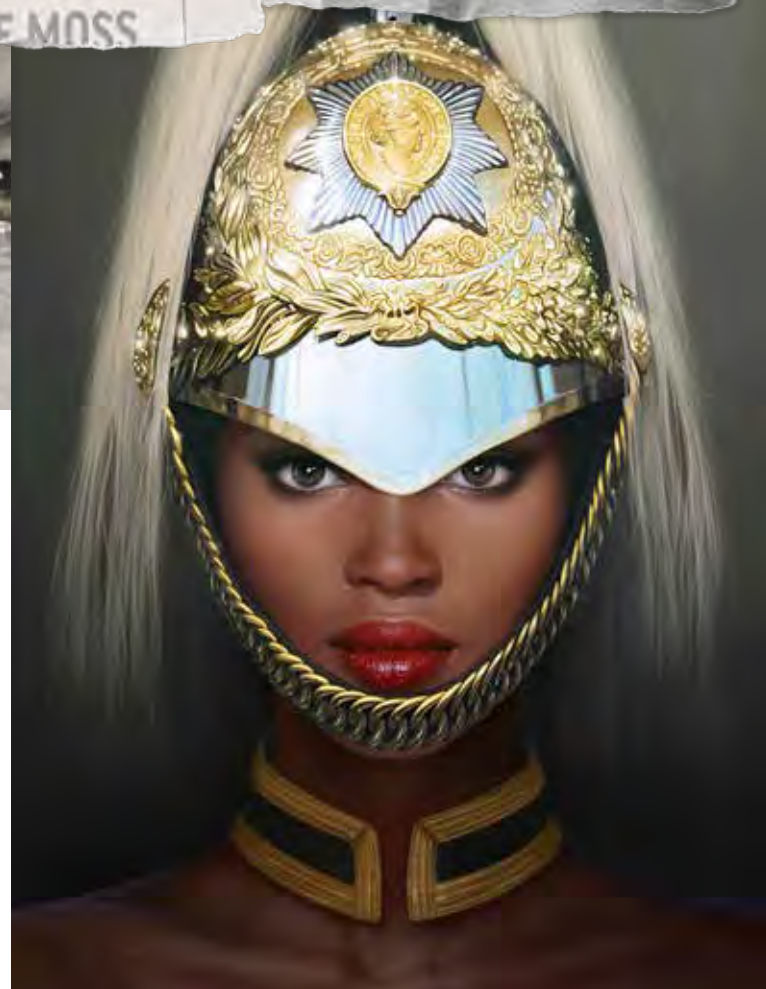
At Q Tower, North America's most acclaimed artist and photographer, renowned for his hyper-realistic illustrative portraits featuring celebrities blowing large bubblegum bubbles, will collaborate with Q Tower.

In his first-ever North American partnership with Michael Moebius, internationally acclaimed artist and photographer, renowned for his hyper-realistic illustrative portraits featuring celebrities blowing large bubblegum bubbles, will collaborate with Q Tower.



### STUNNING ADDITIONS TO Q TOWER ARE SURE TO GIVE RESIDENTS AN IN-HOME EXPERIENCE FIT FOR HOLLYWOOD ROYALTY.

"The viewers can see new perspectives, which include my art, in this beautiful location," he shared. "It's always a beautiful thing to connect art with interior design and architecture. They belong together — if you do it right."



COLLAGE INCLUDES:  
ALL YOU NEED IS GUM (BEATLES) / 2018  
QUEENS GUARD (NAOMI CAMPBELL) / 2022

NEXT PAGES:  
BUNNY (KATE MOSS) / 2022  
QUEENS GUARD (KATE MOSS) / 2021  
ALADDIN SANE (DAVID BOWIE) / 2017





WHERE  
ARTISTRY AND  
IMAGINATION  
COLLIDE, GIVING  
LIFE TO  
CAPTIVATING  
VISIONS



AT THE HEART  
OF THE CITY



# SEEK OUT YOUR DAILY ADVENTURES

## THE NEIGHBOURHOOD

### DINING

- 1 AKIRA BACK
- 2 CHOTTO MATTE TORONTO
- 3 DON ALFONSO 1890
- 4 HARBOUR 60 TORONTO
- 5 KÖST
- 6 MARBL
- 7 MARKED RESTAURANT
- 8 MIKU TORONTO
- 9 MORETTI TORONTO
- 10 STEAM WHISTLE BIERGÄRTEN
- 11 REAL SPORTS BAR

### PARKS

- 12 DAVID PECAUT SQUARE
- 13 HTO PARK
- 14 LOVE PARK
- 15 ROUNDHOUSE PARK
- 16 TORONTO MUSIC GARDEN
- 17 CANOE LANDING PARK
- 18 CLARENCE SQUARE PARK
- 19 HARBOUR SQUARE PARK
- 20 SUGAR BEACH PARK

### ENTERTAINMENT

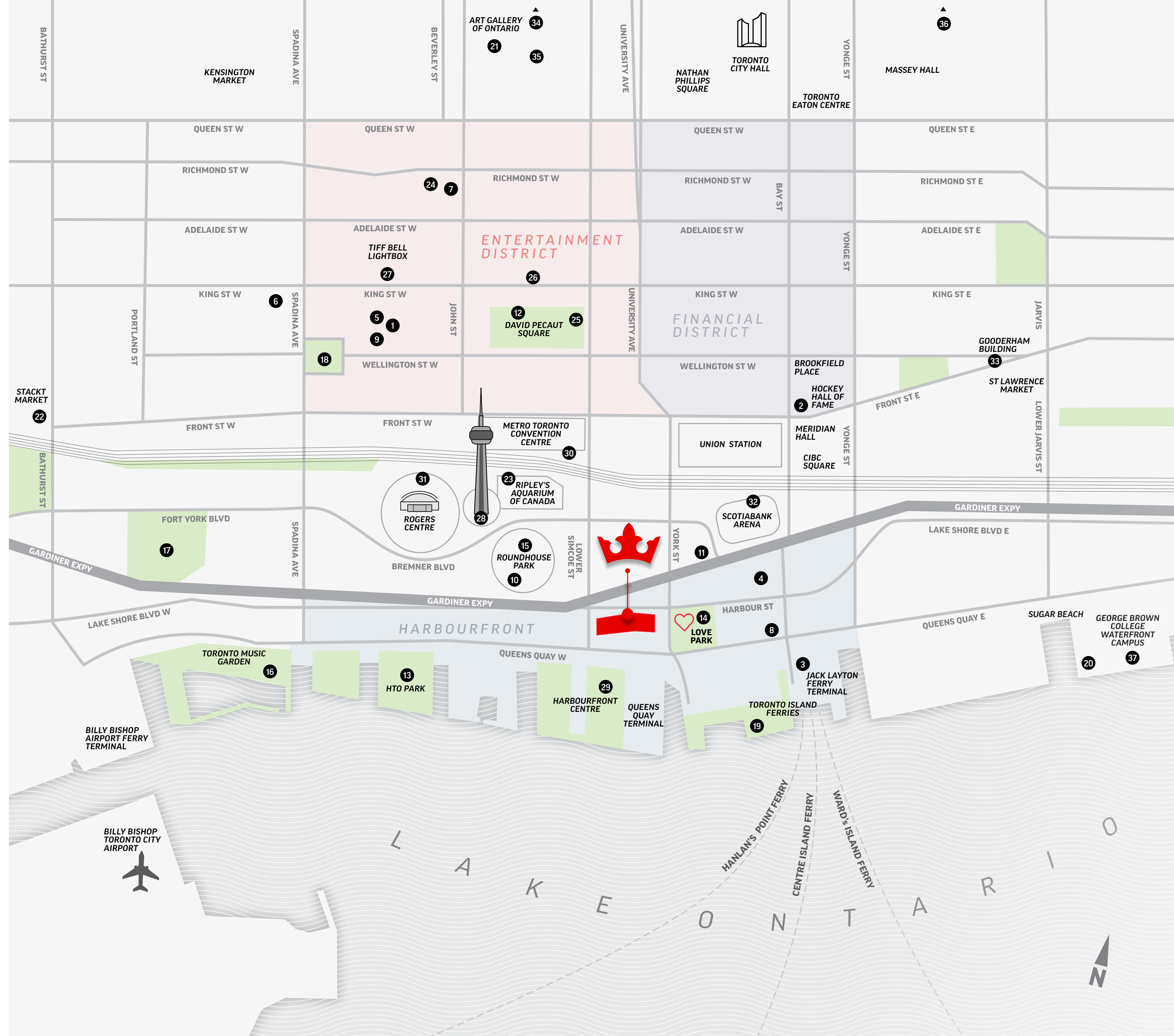
- 21 ART GALLERY OF ONTARIO
- 22 STACKT MARKET
- 23 RIPLEY'S AQUARIUM OF CANADA
- 24 CINEPLEX SCOTIABANK THEATRE
- 25 ROY THOMSON HALL
- 26 ROYAL ALEXANDRA THEATRE
- 27 TIFF BELL LIGHTBOX

### LANDMARKS

- 28 CN TOWER
- 29 HARBOURFRONT CENTRE
- 30 METRO TORONTO CONVENTION CENTRE
- 31 ROGERS CENTRE
- 32 SCOTIABANK ARENA
- 33 GOODERHAM BUILDING

### EDUCATION

- 34 UNIVERSITY OF TORONTO
- 35 OCAD UNIVERSITY
- 36 TORONTO METROPOLITAN UNIVERSITY
- 37 GEORGE BROWN COLLEGE - WATERFRONT CAMPUS



# THE WATERFRONT

## ALWAYS MAKE WAVES

FROM LUSH PARKS AND TRAILS TO DIVERSE ENTERTAINMENT AND CULTURAL EVENTS, THE VIBRANT WATERFRONT AREA OFFERS SOMETHING FOR EVERYONE. BASK IN THE GORGEOUS LAKESIDE VIEWS WHILE SHOPPING, DINING, AND MORE.

The Harbourfront Queens Quay neighbourhood is as lush and tranquil in nature as it is vibrant and varied in its celebration of culture. The renowned Harbourfront Centre buzzes with creativity, featuring art galleries, theatres, and creative spaces. In summer, relish free concerts and festivals showcasing food, crafts, and the arts. In winter, enjoy various events and free outdoor skating. Steps away, the iconic Queen's Quay Terminal, formerly a marine warehouse, is now a hub of upscale shops, restaurants, grocery stores and more.







Tucked along the picturesque shores of Lake Ontario, the once bustling piers of Toronto's industrial harbourfront have transformed into a hotspot destination. Take a leisurely waterfront stroll along several kilometres of scenic pathways that guide you from the enchanting Toronto Music Garden to the relaxing white sands of Sugar Beach. Enjoy spectacular views in nearby parks, score a seat on a popular patio, grab a quick bite from international food vendors and watch the sailboats drift by.



# PUT YOURSELF IN THE GAME

## SPORTS & ENTERTAINMENT

THE SCENE IS LIT. WHETHER WATCHING A RAPTORS GAME, EXPERIENCING MAPLE LEAF SQUARE DURING THE PLAYOFFS, CATCHING QUEEN B, OR EYEING SOME PRETTY BIG FISH – IT'S ALL HAPPENING RIGHT WHERE YOU LIVE.



# FORTUNE SIDES WITH THOSE WHO DARE

## FINANCIAL & ENTERTAINMENT DISTRICTS

BOOMING AND BUSTLING – THE HEART OF CANADA'S FINANCE AND BANKING INDUSTRIES CALL THIS AREA HOME, AS WELL AS SOME OF THE MOST STYLISH SHOPPING AND EXQUISITE CUISINE THAT SATISFIES WHATEVER YOU CRAVE.



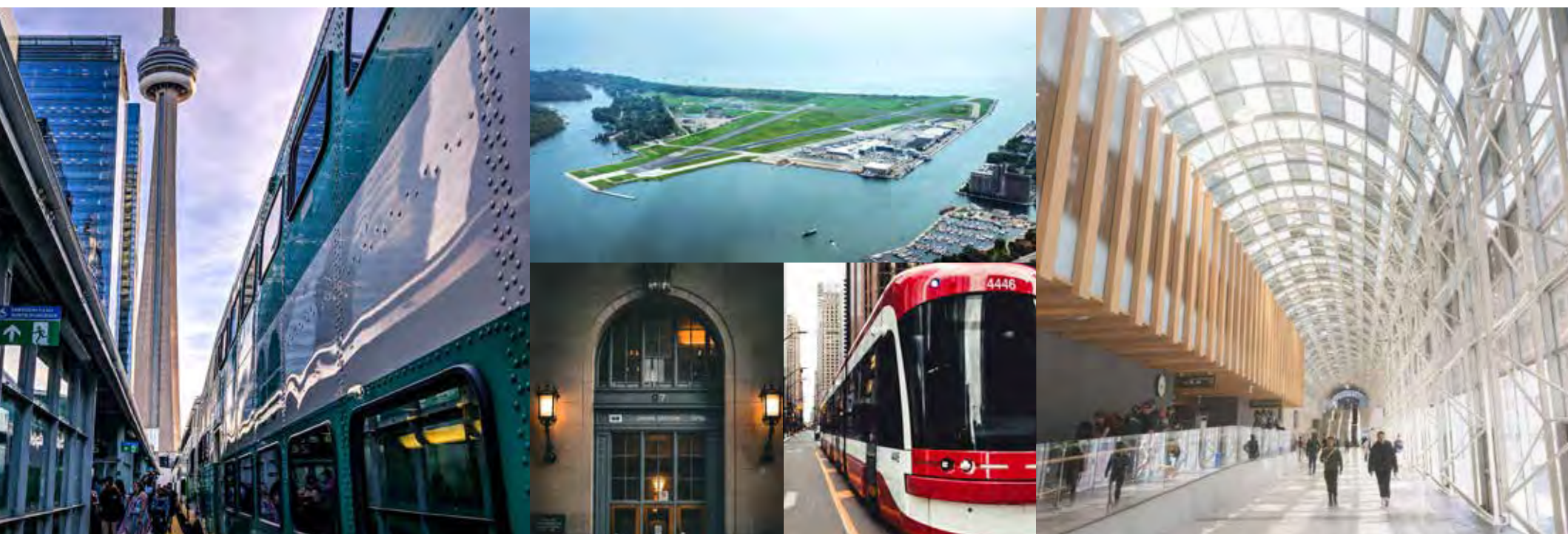
# CONNECT TO AN EASY RITE OF PASSAGE

## TRANSIT CONNECTIONS

CONNECTION IS KEY – AND IN THIS CENTRAL LOCATION YOU'RE GOING PLACES WITH UNMATCHED ACCESS TO THE ENTIRE CITY.

Harbourfront Queens Quay is an excellent area for car-free living. Just a short walk from Union Subway Station, it offers convenient connections within and outside the city. Union Station is served by Go Transit, VIA Rail and the Union-Pearson Express, making getting out of Toronto a breeze. Moreover, Union Station connects to downtown Toronto's PATH, a vast underground pedestrian walkway spanning many kilometres and linking more than 75 buildings, six subway stations, three major department stores, and nine hotels where you'll find thousands of restaurants, shops, services, and popular attractions including the Hockey Hall of Fame, Roy Thomson Hall, Scotiabank Arena, and CF Toronto Eaton Centre.

Streetcars along Queens Quay offer regular connections around the neighbourhood and to other transit hubs, while cyclists have handy access to Bike Share stations and can use the area's dedicated bike lanes for safe commuting to and from the downtown core. Need a quick flight? A six-minute walk through the mainland tunnel will get you to Billy Bishop Island Airport and flying in no time!



100  
TRANSIT SCORE

99  
WALK SCORE

88  
BIKE SCORE





# FEATURES AND FINISHES

## ELEVATED SUITES

- 9' to 10' ceiling heights
- Floor-to-ceiling windows provide downtown views
- Choice of designer-selected flooring throughout the suite and all bedrooms
- Smooth finished ceilings
- Solid entry doors with security view-hole
- Insulated double-glazed windows
- Outdoor living with every suite

## NOUVEAU KITCHENS

- Refined and modern kitchen cabinetry, custom-designed by U31
- Sleek chrome finish plumbing fixtures, with with the option to upgrade
- Choice of stone countertops and contemporary tile backsplash, with the option to upgrade
- State-of-the-art integrated refrigerator and dishwasher
- Stainless steel sink, microwave, oven hood fan and range
- Kitchen island upgrade option available

## SIMPLE AND SLEEK BATHROOMS

- Modern bathroom cabinetry, designed by U31
- Designer-selected countertop and sink
- Wall-mounted vanity mirror
- Designer-selected tub and plumbing fixtures, with the option to upgrade
- Glass shower stall and designer-selected fixtures
- Tile flooring in all bathrooms

## CONVENIENT LAUNDRY

- In-suite laundry closet with stacked washer and dryer
- Tile flooring in laundry closet

## TECH FEATURES

- 1Valet smart home features for all suites
- Individual thermostat for suite temperature control
- Emergency voice communications system, smoke and carbon monoxide detector

- Pre-wiring for cable TV, high-speed Internet access and telephones, as per plan
- Card and key access throughout all common areas
- Enterphone in lobby entrance vestibule
- Remote control/access card for private garage entry
- FOB access throughout common areas

## BUILDING FEATURES

- Poised and bold 60 storey tower designed by Wallman Architects
- Elegant and welcoming lobby with co-working lounge, property management office, mail room and parcel area
- Hotel inspired port cochère
- Convenient locker access
- Secure bicycle storage rooms
- Electric vehicle charging stations available
- WIFI enabled co-working spaces, private meeting rooms, workstations for the urban professional.
- Q Fit is equipped with Freemotion Fitness state of the art cardio equipment powered by iFit, free weights, weight training area with a fitness studio for yoga, meditation and stretching
- Get outside with our outdoor fitness area and social lounge fitted with outdoor fitness equipment, ping pong table and some friendly foosball.
- Kids Zone designed to be a serene space for children of every age to play, be creative and have some outdoor fun!
- Q Lounge featuring private dining area, catering kitchen, wet bar station with both hard and soft seating. Enjoy with friends and family outdoors as well, as the lounge connects to outdoor dining and lounge with BBQ stations and pizza ovens. For the enjoyment of any occasion.
- James Bond inspired Games Room, enjoy the plentiful card and billiards tables and a full catering wet bar.
- Theatre Room with large television screens to enjoy movies, TV shows, sporting events or even some gaming at leisure.
- Outdoor pickleball court with views of the city, the CN Tower while getting a fun workout in.





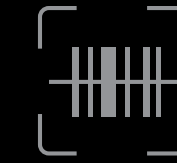
# A SMARTER LIVING EXPERIENCE

CONNECTED LIVING REDEFINED



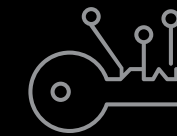
## 1VALET

Q Tower represents the pinnacle of intelligent living, incorporating cutting-edge technology to enhance security and deliver unparalleled convenience at your fingertips. Elevate your lifestyle with 1VALET, Canada's premier residential application, guaranteeing a seamless, smartphone-centric living experience that harnesses the technology of the future to create an even more exceptional living environment.



### PACKAGE SCANNING

GRANT EASY AND SECURE COURIER ACCESS FOR CONVENIENT PACKAGE DELIVERY



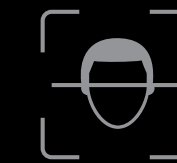
### VIRTUAL KEYS

ALLOW QUICK, SECURE GUEST ACCESS WITH VIRTUAL TEXT KEYS



### KEYLESS SUITE ENTRY

ENJOY EASY ACCESS TO YOUR SUITE USING ONLY YOUR MOBILE PHONE



### FACIAL & DIGITAL ENTRY

NO KEYS? NO PROBLEM. ENTER THE BUILDING USING FACE ID OR THE DIGITAL KEYS ON YOUR MOBILE DEVICE



### VIDEO CALLING

SEE WHO'S AT THE DOOR BEFORE LETTING THEM IN



### LIGHTNING-FAST INTERNET

WIRED FOR SPEED, ROGERS INTERNET PROVIDES SEAMLESS SERVICE

# THE DEVELOPERS



For over four decades, Lifetime Developments has created thriving residential neighbourhoods and successful commercial properties that continuously define new benchmarks in the real estate community.

By consistently demonstrating the vision of identifying key locations poised for growth and inspiring the evolution of dynamic urban communities, Lifetime remains at the forefront of Toronto's real estate and development sector. With several projects that have garnered international acclaim, Lifetime has strategically and consistently acquired unparalleled locations, shaped landmark communities, and rejuvenated Toronto's neighborhoods. An unmatched passion for the industry and diverse portfolio complements Lifetime's strong culture of corporate and social responsibility through their charitable foundation, Lifeline. In realizing their mandate of design innovation, architectural excellence, and enhancing the communities in which they build, Lifetime continues to elevate the standards for vibrant and holistic city building.



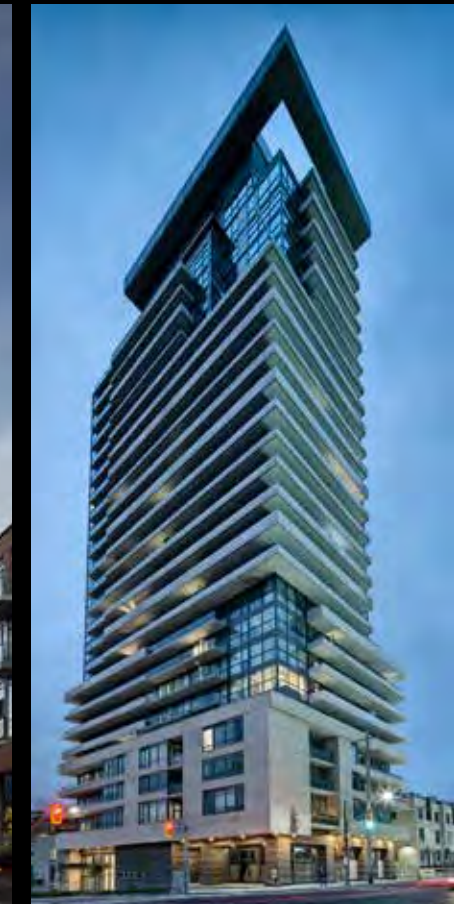
THE WELL



BRIGHTWATER



CELESTE



AYC



BISHA HOTEL



THE YORKVILLE



FOUR SEASONS HOTEL



M5V

# DiamondCorp

DiamondCorp is committed to building a legacy of enhancing the residential, retail, and commercial experience within their spectacular communities. Founded in 2008 by Stephen Diamond, DiamondCorp was built on the legacy of development excellence established by his father, the late Ephraim Diamond, almost 70 years ago. Committed to the future growth of the Greater Toronto Area, DiamondCorp brings forward a history of dedication and experience to develop innovative, high-quality, award-winning communities. We recognize the potential of under-utilized sites and apply practical solutions to planning policies and objectives. By partnering with private and public sector organizations and working with councilors, municipal staff, and community groups, DiamondCorp has built a reputation as a creative developer with real-world solutions to complex challenges.

# THE TEAM

## ARCHITECTURE

[wallmanarchitects.com](http://wallmanarchitects.com)

## WALLMAN ARCHITECTS

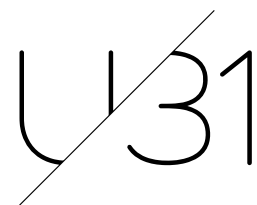
Wallman Architects is a Canadian architectural office dedicated to producing exceptional design. Drawing on the experience of a practice that began in 1985, Rudy Wallman established WA in 2006. Since then, WA has developed an extensive portfolio of remarkable mixed-use, residential, hospitality, institutional and urban design projects across Canada and around the world.

WA offers in-depth partner involvement during design and municipal approvals and is recognized for their ability to operate within demanding bureaucratic and political environments. Working collaboratively, their team of experienced professionals ensure the successful completion of all project phases from design to construction, within the client's budget and timelines. WA values the long-term relationships that they have developed with clients, consultants, contractors, and co-workers.

Each commission enriches the lives of its occupants, is environmentally sustainable and embodies a unique design vision. They embrace the complexities of architectural practice and seek to unlock its potential to enhance the value of the built environment.

## INTERIOR DESIGN

[u31.co](http://u31.co)



U31 is a leading interior architecture and design studio with over twenty-five years of industry experience. Specializing in large-scale mixed-use residential developments, luxury homes and commercial projects, U31 innovatively transforms and elevates the built environment through inspired, tailored, and diverse designs.

## PRE-CONSTRUCTION SALES

[austinbirch.com](http://austinbirch.com)

## AUSTIN BIRCH

With a reputation for pioneering unprecedented new technologies, exciting project positioning and extensive market research, Austin Birch is recognized for their tailored design to marketing, and product development, offering developers effective sales solutions that bring every detail together.

## VISUAL CONTENT FOR REAL ESTATE DEVELOPMENT, ARCHITECTURE AND DESIGN

[normli.ca](http://normli.ca)

## NORM LI

Norm Li is a visual content studio and creative consultancy. They create experiences that connect developers and designers with their audiences. Their renderings, films, animations, interactive experiences, are a constant presence in the Toronto preconstruction development industry.

## FULLY INTEGRATED PUBLIC RELATIONS FIRM

[nkpr.net](http://nkpr.net)

## NKPR

NKPR is a full-service public relations, artist management, and digital agency with global reach, founded in 2002 by Natasha Koifman. With offices in Toronto and New York, NKPR works with the brightest in the field, leveraging their extensive expertise to develop fully integrated strategies that deliver meaningful results for client partners. The firm is passionate about sharing stories of substance, developing innovative communications plans that help drive success.

## STRATEGIC REAL ESTATE MARKETING GROUP

[montanasteele.com](http://montanasteele.com)

## montanasteele

Toronto-based strategic marketing firm Montana Steele has been creating award-winning real estate brands, at home and around the world, for more than two decades. The firm is widely regarded as North America's leading agency for new homes and condo developments, and for good reason; in 25 years Montana Steele has launched nearly 1000 successful projects, in 30 cities, with some of the biggest names in the business. From launch to sell-out, from beginning to end, Montana Steele crafts the story of how people want to live.



“...BECOME THE PERSON  
YOU ALWAYS  
SHOULD HAVE BEEN.”

DAVID BOWIE



© 2023 LIFETIME DEVELOPMENTS AND DIAMONDCORP.  
ALL RIGHTS RESERVED. SPECIFICATIONS SUBJECT TO CHANGE WITHOUT NOTICE.  
ILLUSTRATIONS ARE ARTIST'S CONCEPT. E.&O.E.  
EXCLUSIVE LISTING BROKERAGE: AUSTIN BIRCH. BROKERS PROTECTED.

QTOWER.CA



| DiamondCorp